



Citrus Berri

Sample ID: G1I0330-05

Matrix: Industrial Hemp

Test ID: 5010500

Source ID:

Date Sampled: 09/16/21

Date Accepted: 09/16/21

Aglife Farms, LLC

Results at a Glance

Total THC : 0.6916 %

Total CBD : 16.77 %

Total CBG : 0.4188 %



**ISO 17025
ACCREDITED
LABORATORY**

Eric Wendt
Chief Science Officer - 9/20/2021

These results relate only to the sample included on this report. The report may not be reproduced except in full, without the written permission of Green Leaf Lab.

This is for informational testing and is not compliance testing. Lab results apply to the sample as received.



Citrus Berri

Sample ID: G110330-05

Matrix: Industrial Hemp

Test ID: 5010500

Source ID:

Date Sampled: 09/16/21

Date Accepted: 09/16/21

Aglife Farms, LLC

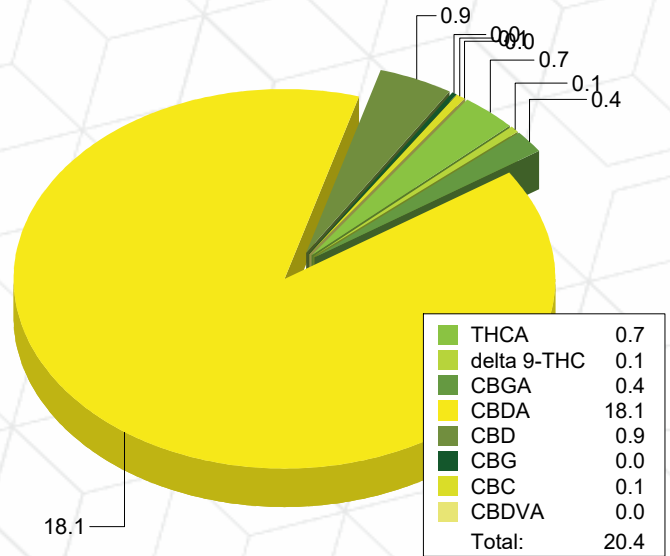
Potency Analysis

Date/Time Extracted: 09/19/21 09:19

Analysis Method/SOP: 215

Batch Identification: 2139005

Cannabinoids	LOQ (%)	% by Wt.	mg/g	Cannabinoids Profile
Total THC	0.009080	0.6916	6.916	
Total CBD	0.008300	16.77	167.7	
Total CBG	7.900E-4	0.4188	4.188	
THCA	0.002920	0.7063	7.063	
delta 9-THC	0.009080	0.07214	0.7214	
delta 8-THC	0.004490	< LOQ	< LOQ	
THCV	0.005055	< LOQ	< LOQ	
THCVA	0.001885	< LOQ	< LOQ	
CBD	0.006220	0.8974	8.974	
CBDA	0.008300	18.10	181	
CBDV	0.005000	< LOQ	< LOQ	
CBDVA	0.001640	0.01634	0.1634	
CBN	0.002990	< LOQ	< LOQ	
CBG	7.900E-4	0.04299	0.4299	
CBGA	7.900E-4	0.4281	4.281	
CBC	0.008965	0.1117	1.117	



Total THC = delta 9-THC + (THCA * 0.877)

Total CBD = CBD + (CBDA * 0.877)

Total CBG = CBG + (CBGA * 0.878)

LOQ=Limit of Quantification, the lowest measurable concentration of an analyte.



**ISO 17025
ACCREDITED
LABORATORY**

Eric Wendt
Chief Science Officer - 9/20/2021

These results relate only to the sample included on this report. The report may not be reproduced except in full, without the written permission of Green Leaf Lab.

This is for informational testing and is not compliance testing. Lab results apply to the sample as received.



Quality Control Potency

Batch: 2139005 - 215-Hemp

Blank(2139005-BLK1)							
Analyte	Result	LOQ	Units	%Recovery Limits	Extracted	Analyzed	Notes
THCA	< LOQ	0.002920	%		09/19/21 09:19	09/19/21 14:14	
delta 9-THC	< LOQ	0.009080	%		09/19/21 09:19	09/19/21 14:14	
delta 8-THC	< LOQ	0.004490	%		09/19/21 09:19	09/19/21 14:14	
THCV	< LOQ	0.005055	%		09/19/21 09:19	09/19/21 14:14	
THCVA	< LOQ	0.001885	%		09/19/21 09:19	09/19/21 14:14	
CBD	< LOQ	0.001555	%		09/19/21 09:19	09/19/21 14:14	
CBDA	< LOQ	0.002075	%		09/19/21 09:19	09/19/21 14:14	
CBDV	< LOQ	0.005000	%		09/19/21 09:19	09/19/21 14:14	
CBDVA	< LOQ	0.001640	%		09/19/21 09:19	09/19/21 14:14	
CBN	< LOQ	0.002990	%		09/19/21 09:19	09/19/21 14:14	
CBG	< LOQ	7.900E-4	%		09/19/21 09:19	09/19/21 14:14	
CBGA	< LOQ	7.900E-4	%		09/19/21 09:19	09/19/21 14:14	
CBC	< LOQ	0.008965	%		09/19/21 09:19	09/19/21 14:14	

Reference(2139005-SRM1)							
Analyte	% Recovery	LOQ	Units	%Recovery Limits	Extracted	Analyzed	Notes
THCA	99.4	0.002920	%	80-120	09/19/21 09:19	09/19/21 14:37	
delta 9-THC	96.7	0.009080	%	80-120	09/19/21 09:19	09/19/21 14:37	
CBD	100	0.001555	%	80-120	09/19/21 09:19	09/19/21 14:37	
CBDA	102	0.002075	%	80-120	09/19/21 09:19	09/19/21 14:37	



Eric Wendt
Chief Science Officer - 9/20/2021

These results relate only to the sample included on this report. The report may not be reproduced except in full, without the written permission of Green Leaf Lab.

This is for informational testing and is not compliance testing. Lab results apply to the sample as received.



Notes and Definitions

- ATM Non-cannabis matrix related interference or suppression of Internal standard
- BLI Baseline Interference - Cannabinoid peak interference in chromatographic baseline affecting QC recovery .
- BLK Analyte detected in method blank, but not associated samples.
- BSH Blank Spike High - Blank Spike recovery above method limit. no detections in samples.
- BSL Blank Spike Low - Blank Spike recovery below lower method limit, analyte chromatography reviewed manually for all samples.
- C Interference due to co-elution
- CBD Interference due to co-elution
- CV1 CBD matrix interference on GC Pest chromatography
- CV2 CCV was above acceptance criteria, Non-detect samples are considered acceptable.
- INF CCV was below acceptance criteria, sample still exceeds regulatory limit.
- ISH One or more QC falls outside acceptance criteria. Data entered into LIMS for informational purposes only.
- ISL Internal Standard concentration is above acceptance criteria.
- MSH Internal Standard concentration is below acceptance criteria.
- MSI Matrix Spike High - Matrix Spike recovery above method limits.
- MSL Matrix Spike Interference - Matrix spike source sample contains analyte hit above calibration affecting recovery accuracy in Matrix Spike.
- TPP
- U Matrix Spike Low - Matrix Spike recovery below lower method limit, analyte chromatography reviewed manually for all samples.
Internal Standard concentration outside control limit due to matrix interference



Eric Wendt
Chief Science Officer - 9/20/2021

These results relate only to the sample included on this report. The report may not be reproduced except in full, without the written permission of Green Leaf Lab.

This is for informational testing and is not compliance testing. Lab results apply to the sample as received.